

89171450-2

E-BREEZE Pro Plus

- Heavy-duty Brushless DC Electric Motor
- Variable displacement compressor
- High and low side pressure monitoring
- Major components are IP65 rated
- For 12-Volt Vehicle Applications



Part of the...

E-BREEZE SERIES

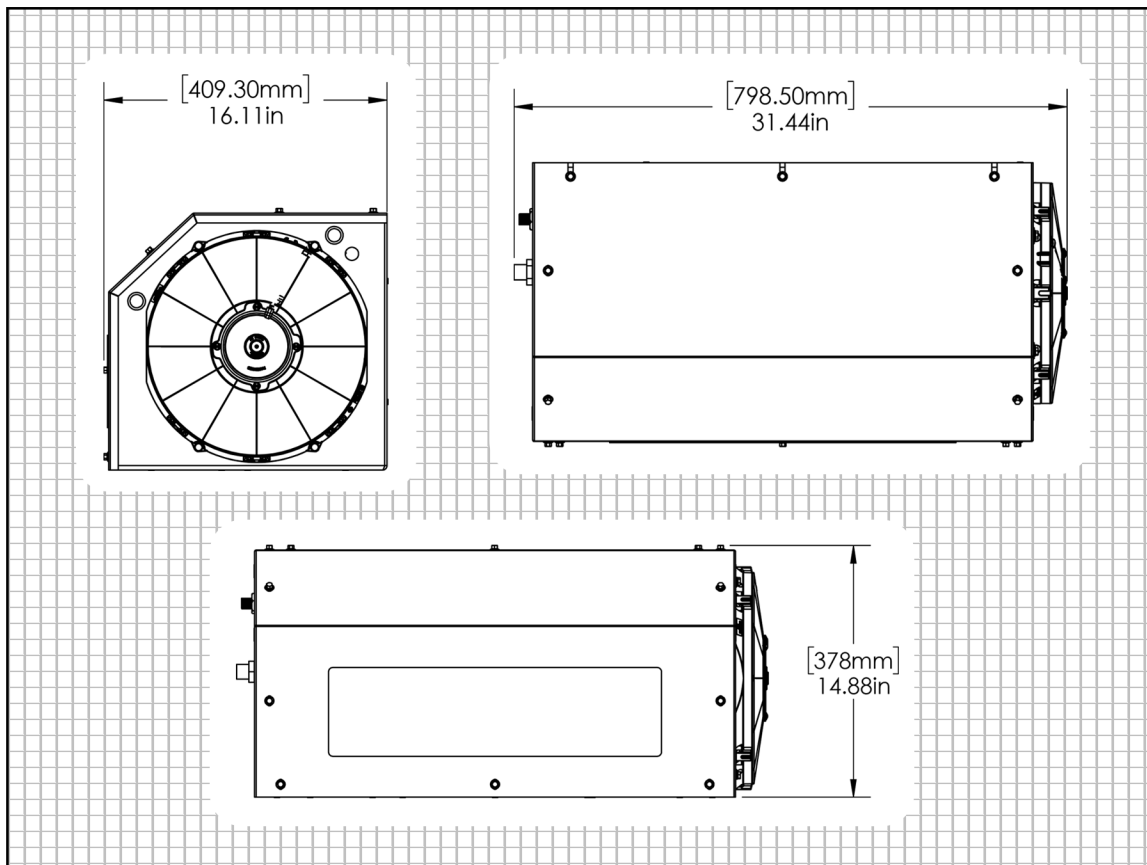
...of products

89171450-2 SPECIFICATIONS

CAPACITY (@100°F): 12,045 BTUH

WEIGHT: 277.5 lbs (125.8 kg) with batteries

Max. Energy Use: 1,548 Watts @ 12VDC @ 100°F Ambient



PRODUCT DIMENSIONS

Width:
31.44 in
[798.50 mm]

Height:
14.88 in
[378 mm]

Depth:
16.11 in
[409.30 mm]

SCAN FOR MORE INFORMATION

